



OUR GLOBAL
COMPETENCE
CENTRES

 APOLLO DISPLAY
TECHNOLOGIES



 DISTEC



 DISPLAY
TECHNOLOGY



Datasheet

Distec

POS-I-034-00-PRO

Round 3.4" Touch Monitor

MO-06-400 Series



Version 0.7

22.09.2021

The information contained in this document has been carefully researched and is, to the best of our knowledge, accurate. However, we assume no liability for any product failures or damages, immediate or consequential, resulting from the use of the information provided herein. Our products are not intended for use in systems in which failures of product could result in personal injury. All trademarks mentioned herein are property of their respective owners. All specifications are subject to change without notice.

Table of Contents

1	Revision History	4
2	Description	5
3	Characteristics	6
4	Mechanical Drawing	7
4.1.1	MO-06-401 Base Module	7
4.1.2	MO-06-402 Base Module +Additional Cable Set.....	8
4.1.3	MO-06-403 Base Module +Raspberry Pi Module +Cable Set.....	9
4.1.4	MO-06-404 Pre-Assembled Monitor Module.....	10
5	Optional Accessories	11
5.1	Overview	11
5.1.1	Raspberry Pi Module	12
5.1.2	Mounting Frame	13
6	Application Software	14
6.1	Embedded Wizard.....	14

Preliminary

1 Revision History

Date	Rev.No.	Description	Page
14.07.2020	0.1	Preliminary Version	All
18.11.2020	0.2	Revised Preliminary Version; new description, image, added drawings	All
20.01.2021	0.3	Revised description, order of characteristics and new cover/last page	5, 6
29.04.2021	0.4	Weight in characteristics, application software	6,13
06.05.2021	0.5	Revised product names	5
27.07.2021	0.6	New Template	all
22.09.2021	0.7	Optional Accessories: Overview	11

Preliminary

2 Description

Distec's 3,4" POS-I-034-00-PRO is a round CE certified and optionally IP65 front proof monitor solution. Its modular design allows to use it as a standalone monitor, kit solution or fully integrated IPC based on the Raspberry Pi 4. Therefore, it is the perfect solution for Industry 4.0 and Internet of Things projects.

Its robust but slim cover offers all options for integration and various applications. The POS-I-034-00-PRO is equipped with an industrial high-brightness display and is designed for long term availability.

The POS-I Series features:

- an integrated multi finger PCAP touchscreen
- an ambient light sensor for automatic brightness adjustment to ambient light conditions
- integrated passive cooling, which allows operating the system under full load even at high ambient temperatures
- *As Option:* in-wall mounting frame for a variety of integrations in concrete, wooden, or drywall constructions

The Raspberry Pi 4 offers all advantages of a modern ARM processor platform:

- driven by single 5V power supply
- Standard configuration: Raspian, 4 GB model, 16 GB SD card
- Interface: LAN, 2x HDMI-IN, 2x USB 3.0, 2x USB 2, Line-out, Micro-SD card reader
- 2.4 GHz and 5.0 GHz IEEE 802.11ac wireless, Bluetooth 5.0, BLE

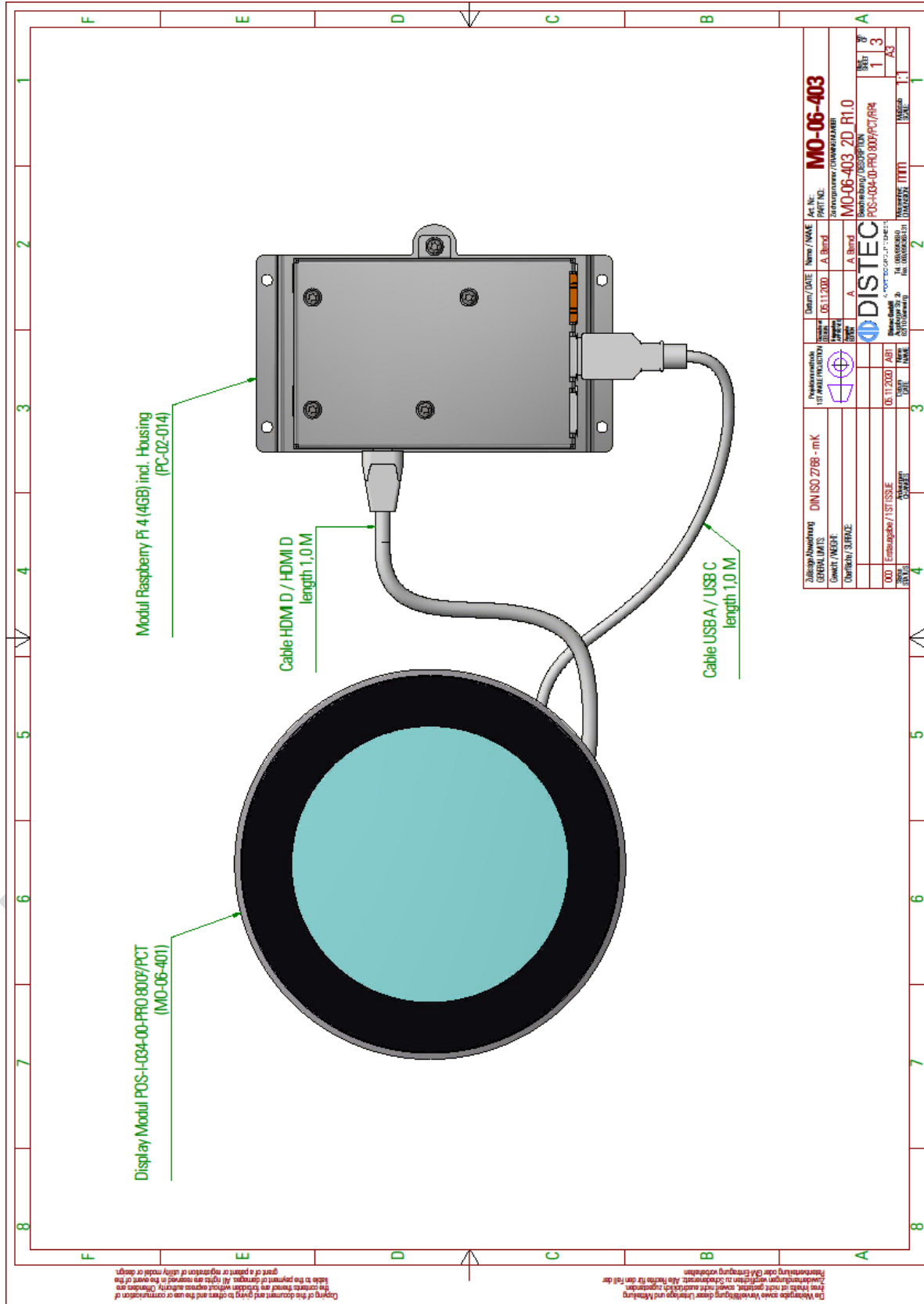
Users are able to program their own applications on a Raspberry Pi basis or using all operating systems and application programs, which are supplied and supported by the large community.

Product	Part No.	Model	Features
POS-I-034-00-PRO-V1 800x800/PCT	MO-06-401	Variant 1	Base Module
POS-I-034-00-PRO-V2 800x800/PCT/Cable	MO-06-402	Variant 2	Base Module +Additional Cable Set
POS-I-034-00-PRO-V3 800x800/PCT/RP4	MO-06-403	Variant 3	Base Module +Raspberry Pi Module +Cable Set
POS-I-034-00-PRO-V4 800x800/PCT/RP/Fram e	MO-06-404	Variant 4	Pre-Assembled Monitor Module

3 Characteristics

Items	Unit	Specification
Screen Diagonal	[inch]	3.4"
Pixels H x V		800 x 800
Supported Colors		16.7M (8bit color)
Brightness	[cd/m ²]	350
Viewing Angle	u/d/l/r	80/80/80/80
Nominal Input Voltage	[V]	5
Typical Power Consumption Monitor	[W]	t.b.a.
Typical Power Consumption Monitor + RP4	[W]	t.b.a.
Electrical Interface Monitor		5V, USB, HDMI-IN
Electrical Interface RP4 Module		5V, USB, Audio, SD Card, Ethernet RJ45, HDMI
Memory	GB	4
SD	GB	16
PCAP Touchscreen Touchpoints	finger	10
Storage Temperature Monitor V1-V2	[°C]	-30 to +80
Operating Temperature Range Monitor V1-V2	[°C]	-20 to +70
Storage Temperature Monitor V3	[°C]	-30 to +80 (RP4: 0 to +50)
Operating Temperature Range Monitor V3	[°C]	-20 to +70 (RP4: 0 to +50)
Storage Temperature Monitor + RP4	[°C]	0 to +50
Operating Temperature Range Monitor + RP4	[°C]	0 to +50
IP rating monitor		Front IP65
Physical Size H x V x D	[mm]	125 x 125 x 4,7
Active Area H x V	[mm]	87.6 x 87.6
Weight Variant 1	[kg]	0,175
Weight Variant 2	[kg]	0,250
Weight Variant 3	[kg]	0,400
Weight Variant 4	[kg]	0,580

4.1.3 MO-06-403 | Base Module + Raspberry Pi Module + Cable Set



4.1.4 MO-06-404 | Pre-Assembled Monitor Module

The drawing illustrates the assembly of the MO-06-404 Pre-Assembled Monitor Module. It shows the following components and steps:

- Standard Ansicht von vorne (STANDARD FRONT VIEW):** Shows the final assembled module with a display module and a mounting frame.
- Display Modul POS-I-034-00-PRO 800P/PCT (MO-06-001):** The display module to be installed.
- POS-PP-034-00-PRO In-Wall Mounting frame (MK-06-015):** The mounting frame for the display module.
- Cable USB-A / USB-C length 0,3 M:** Cable connecting the display module to the Raspberry Pi 4.
- Cable HDMI-D / HDMI-D length 0,3 M:** Cable connecting the display module to the Raspberry Pi 4.
- incl. mounting accessories:**
 - 4 x Bolt M3x10
 - 4 x nut M3
 - 4 x sleeve 1mm
 - 4 x sleeve 2mm
 - 4 x sleeve 4mm
- preassembled Modul Raspberry Pi 4:** The Raspberry Pi 4 module being assembled into the frame.

Technical Specifications and Part List:

Part No.	Part Name	Quantity
MO-06-404	Pre-Assembled Monitor Module	1
MO-06-001	Display Modul POS-I-034-00-PRO 800P/PCT	1
MK-06-015	POS-PP-034-00-PRO In-Wall Mounting frame	1
	4 x Bolt M3x10	4
	4 x nut M3	4
	4 x sleeve 1mm	4
	4 x sleeve 2mm	4
	4 x sleeve 4mm	4

Manufacturer Information:

DISTEC
 Industriestraße 25
 32756 Springe
 Germany

Part No.: MO-06-404
Version: 0.7
Release Date: 22.09.2021

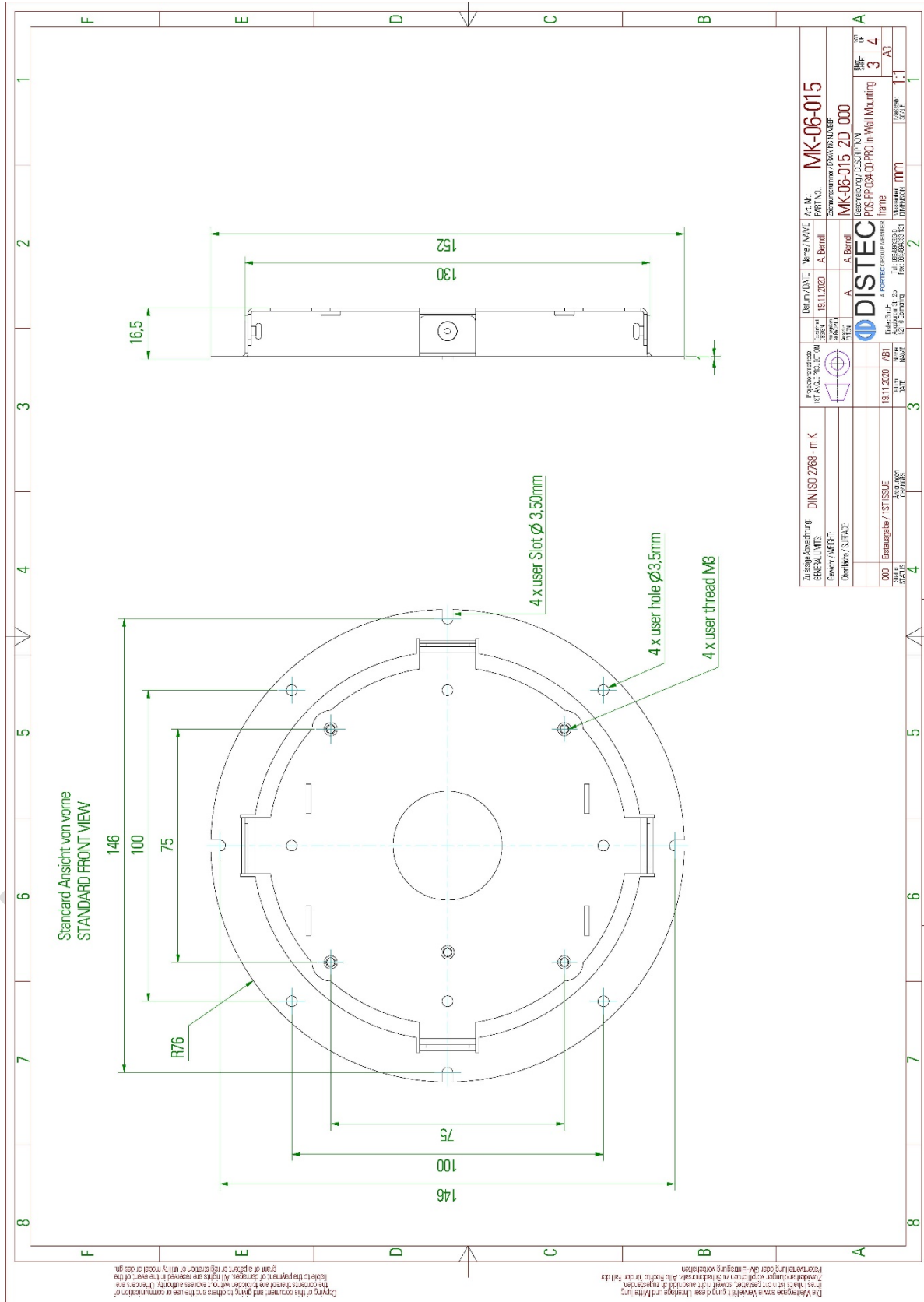
5 Optional Accessories

5.1 Overview

PSU USB-C	NT-01-104	AC Adapter KSA-15E-051300HE black, EU
Raspberry Pi Module	PC-02-022	Raspberry Pi 4 B 4GB
Micro SD-Card	PC-04-030	microSDHC CARD 16GB SANDISK ULTRA 80MB/S
WiFi	PC-04-035	EDIMAX EW-7811UN V2 Wireless USB Adapter

Preliminary

5.1.2 Mounting Frame



6 Application Software

6.1 Embedded Wizard



Embedded Wizard is TARA Systems' embedded GUI technology that enables you to create platform-independent and high-performance graphical user interfaces (GUI), even on resource constrained microcontrollers.

Preliminary

Our company network supports you worldwide with offices in Germany, Austria, Switzerland, the UK and the USA. For more information please contact:

Headquarters

Germany



FORTEC Elektronik AG

Augsburger Str. 2b
82110 Germering

Phone: +49 89 894450-0
E-Mail: info@fortecag.de
Internet: www.fortecag.de

Fortec Group Members

Austria



Distec GmbH Office Vienna

Nuschingasse 12
1230 Wien

Phone: +43 1 8673492-0
E-Mail: info@distec.de
Internet: www.distec.de

Germany



Distec GmbH

Augsburger Str. 2b
82110 Germering

Phone: +49 89 894363-0
E-Mail: info@distec.de
Internet: www.distec.de

Switzerland



ALTRAC AG

Bahnhofstraße 3
5436 Würenlos

Phone: +41 44 7446111
E-Mail: info@altrac.ch
Internet: www.altrac.ch

United Kingdom



Display Technology Ltd.

Osprey House, 1 Osprey Court
Hinchingsbrooke Business Park
Huntingdon, Cambridgeshire, PE29 6FN

Phone: +44 1480 411600
E-Mail: info@displaytechnology.co.uk
Internet: www.displaytechnology.co.uk

USA



Apollo Display Technologies, Corp.

87 Raynor Avenue, Unit 1
Ronkonkoma, NY 11779

Phone: +1 631 5804360
E-Mail: info@apolloDisplays.com
Internet: www.apolloDisplays.com